



STATIC or IN MOTION MOBILE TRAIN WEIGHER

"Take the scale to the train"



FEATURES:

- User friendly
- Four easy steps to install (2 men - approx. 15 minutes)
- Transportable in the boot of a car
- Loadcell based system
- In motion or Static weighing

The **MTW** is a train weighing system that can be transported in the boot of a car, utility or train cabin and set up to weigh and spot check a rail vehicle/train anywhere static or in motion.

The MTW offers one of the world's most convenient, safe & accurate train weighing solutions.

The MTW design incorporates a chassis arrangement with an integrated loadcell, this design means weight is applied directly to the loadcell and not through the rail.

The advantage of weighing axle by axle is that there is no restriction with regards to wagon type. The MTW is factory pre-calibrated, so that no transport of test weights are required. (individual wheel weights can also be obtained).



Battery operated digital readout printer in carry case

- Wheel, axle, bogie & total vehicle weight
- Multiple MTW's can be combined together
- Fits all recognised rail gauges
- Fits most rail sizes
- Instant printout and /or download to any device via internet

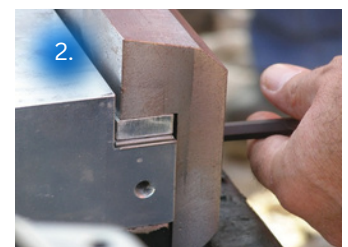
BENEFITS:

- *No track downtime during installation*
- *No costly civil works required*
- *Battery operated*
- *Simple operation*

4 easy steps to install:



1. Measuring the height to determine packer size



2. Attaching the Rail Shoe



3. Inserting the MTW into the track and expanding the system via the threaded support poles



4. Connecting the cables, wireless option also available

MTW-S (STATIC)

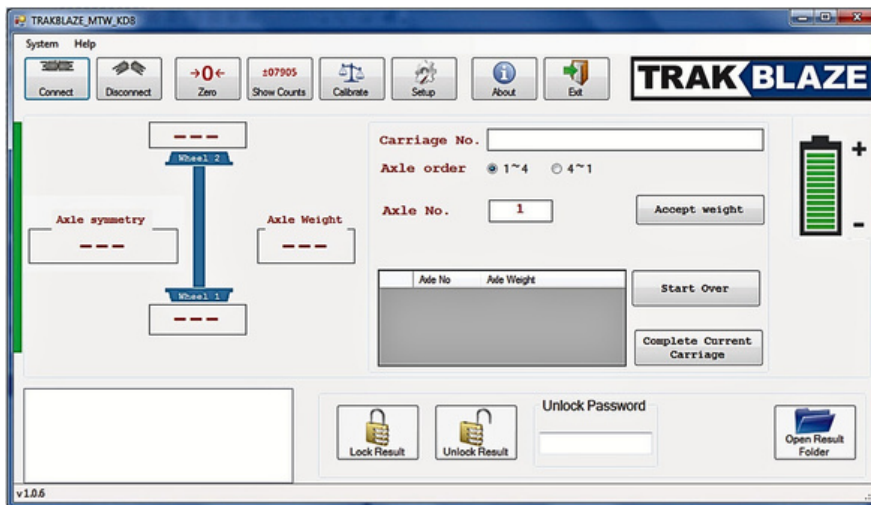
MTW-D (IN-MOTION)

TECHNICAL DATA

| | |
|-------------------|---|
| Length | 560 ~ 600 ~ 656mm |
| Approx. Weight | 20kg - 100kg |
| Power Supply | 240V AC / 12V internal battery |
| Materials | High quality tool and mild steel |
| Capacity (max) | 17.5t / wheel, 35t / axle |
| Increment size | 0.02t |
| Protection class | IP-67 / IP-65 |
| Temperature | -20°C - +70°C |
| Mounting | Rail shoe to fit rail type |
| Installation time | 10 - 15 minutes (two men) |
| Accuracy | ± 0.5% Subject to good truck condition and rolling stock |

TECHNICAL DATA

| | |
|-------------------|---|
| Length | 560 ~ 600 ~ 656mm |
| Approx. Weight | 20kg - 100kg |
| Power Supply | 240V AC / 12V internal battery |
| Materials | High quality tool and mild steel |
| Capacity (max) | 17.5t / wheel, 35t / axle |
| Increment size | 0.05t |
| Protection class | IP-67 / IP-65 |
| Temperature | -20°C - +70°C |
| Mounting | Rail shoe to fit rail type |
| Installation time | approx. 10 - 15 minutes (two men) |
| Accuracy | 2 - 3%. Less than 1% under ideal conditions |



Customised PC software (optional) displays and records all the weight data

| A/N | Wheel 1 | Wheel 2 | Axle Total | WC | km/h |
|------------|---------|---------|--------------------|----|------|
| Locomotive | | | | | |
| F | 5350 kg | 5850 kg | 11200 kg | 0 | 4.7 |
| F | 5350 kg | 5850 kg | 11200 kg | 0 | 4.5 |
| F | 5350 kg | 5850 kg | 11200 kg | 0 | 4.3 |
| F | 5350 kg | 5850 kg | 11200 kg | 0 | 4.3 |
| F | 5350 kg | 5850 kg | 11200 kg | 0 | 4.2 |
| F | 5350 kg | 5850 kg | 11200 kg | 0 | 4.2 |
| Wagon 1 | | | | | |
| 1 | 5350 kg | 5850 kg | 11200 kg | 0 | 4.4 |
| 2 | 5350 kg | 5850 kg | 11200 kg | 0 | 4.3 |
| 3 | 5350 kg | 5850 kg | 11200 kg | 0 | 4.2 |
| 4 | 5350 kg | 5850 kg | 11200 kg | 0 | 4.3 |
| | | | 44800 kg | | |
| | | | Total wagon weight | | |
| | | | 44800 kg | | |

Sample of Printout from built in printer



MTW-MS (Multiple Systems)



MTW-MS (Multiple Systems)



MTW Kit

CONSISTS OF (single base unit)

- 2 x loadcells
- 2 x scale main bodies
- 1 x set of shoes (to suit nominated rail type)
- 1 x set of spacer poles
- 1 x height measuring gauge
- 1 x weight indicator & printer housed in carrycase
- 1 x set of height packers
- 1 x battery charger
- 1 x spanner
- 1 x cable set
- 1 x operation manual



MTW secure storage & transport box



Instructional Video



TRAKBLAZE Pty Ltd

Tel: +61 3 9318 9277 Fax: +61 3 9318 9533

E-mail: info@trakblaze.com

www.trakblaze.com

5 Mareno Road, Tullmarine, Victoria, Australia 3043

Over 90 Years of Global Experience in Bespoke Weighing & Balancing Systems



MINING, RAIL, ROAD & AIRCRAFT WEIGHING SYSTEMS

