

TRAKMATE

Rail Workshop Weighing & Balancing System

Precision Weighing, Perfect Balance & Optimised Performance



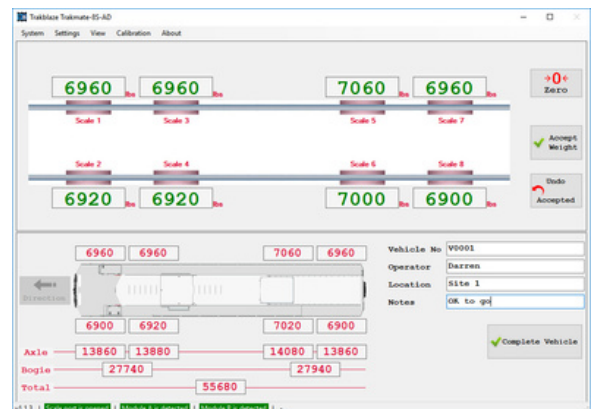
TRAKMATE is an innovative and versatile weighing and balancing solution designed for all types of rail vehicles. Engineered for precision and efficiency, it provides an essential tool for rail manufacturing, maintenance workshops, and other relevant applications. With its unique design, TRAKMATE delivers accurate and reliable measurements, ensuring optimal rail vehicle performance and safety.

Why should a rail vehicle be balanced?

- Possibly prevent derailments
- To improve safety
- Prevent break lockups & wheel flat spots
- Evenly balanced rail vehicles provide improved ride comfort in turn providing better fuel economy & less emissions
- Prevent rail vehicle & rail infrastructure damage

Benefits:

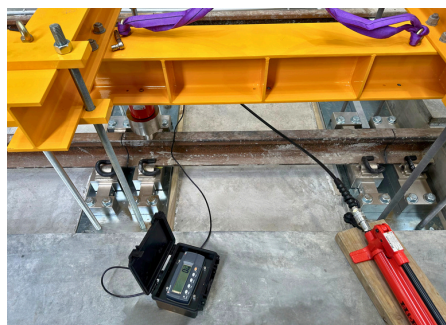
- Bespoke designs to suit your existing infrastructure
- Heavy duty - with overload protection
- Any wheel weight combination
- Temperature compensated
- Cost effective
- Up to 32 weighing modules available



Touch screen PC controller



Bogie balancing press fitted with TRAKMATE loadcells



TRAKMATE test press is used for on-site calibration - no test train required

