



Static or In-Motion Mobile Train Weigher

"Take the scale to the train"



The MTW is a highly portable train weighing system that can be easily transported in the boot of a car, utility vehicle, or train cabin. Designed for both static and in-motion weighing, it enables quick and accurate spot checks of rail vehicles anywhere.

Offering one of the world's most convenient, safe, and precise train weighing solutions, the MTW features a chassis-integrated load cell. This innovative design ensures that weight is applied directly to the load cell rather than through the rail, enhancing measurement accuracy.

By weighing axle by axle, the MTW accommodates all wagon types without restriction. It comes factory pre-calibrated, eliminating the need for transporting test weights. Additionally, individual wheel weights can also be measured when required.



FEATURES:

- User friendly
- Four easy steps to install (2 men - approx. 15 minutes)
- Transportable in the boot of a car
- Loadcell based system
- In-motion or Static weighing
- Wheel, axle, bogie & total vehicle weight
- Multiple MTW's can be combined together
- Fits all recognised rail gauges
- Fits most rail sizes
- Instant printout and /or download to any device via internet

4 easy steps to install:



1. Measuring the height to determine packer size



2. Attaching the Rail Shoe



3. Inserting the MTW into the track and expanding the system via the threaded support poles



4. Connecting the cables, wireless option also available

BENEFITS:

- No track downtime during installation
- No costly civil works required
- Battery operated
- Simple operation



Battery operated digital readout printer in carry case

Technical Data MTW-S

Length	560 ~ 600 ~ 656mm
Approx. Weight	20kg - 100kg
Power Supply	240V AC / 12V internal battery
Materials	High quality tool and mild steel
Capacity (max)	17.5t / wheel, 35t / axle
Increment size	0.02t
Protection class	IP-67 / IP-65
Temperature	-20°C - +70°C
Mounting	Rail shoe to fit rail type
Installation time	10 - 15 minutes (two men)
Accuracy	± 0.5% Subject to good truck condition and rolling stock

Note: Images are for illustration purposes only. Speeds and accuracies may vary based on site conditions and vehicle operation.

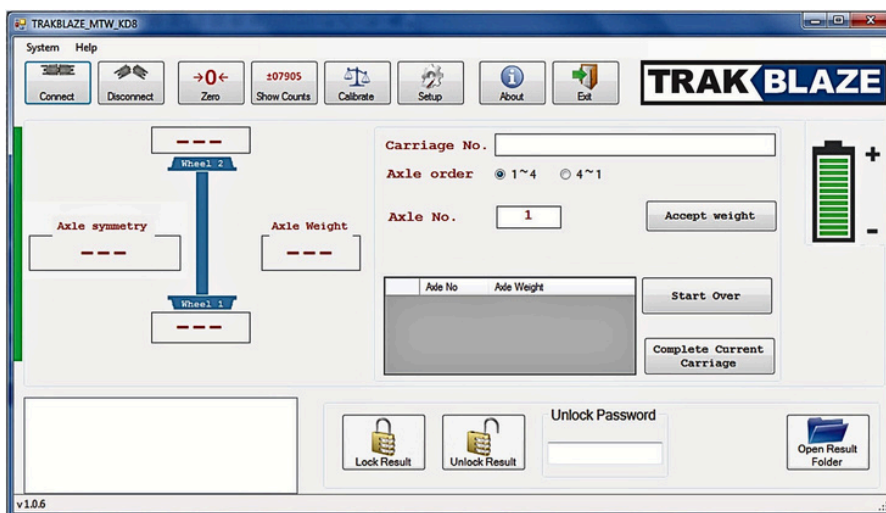
Technical Data MTW-D

Length	560 ~ 600 ~ 656mm
Approx. Weight	20kg - 100kg
Power Supply	240V AC / 12V internal battery
Materials	High quality tool and mild steel
Capacity (max)	17.5t / wheel, 35t / axle
Increment size	0.05t
Protection class	IP-67 / IP-65
Temperature	-20°C - +70°C
Mounting	Rail shoe to fit rail type
Installation time	approx. 10 - 15 minutes (two men)
Accuracy	2 - 3%. Less than 1% under ideal conditions

Note: Images are for illustration purposes only. Speeds and accuracies may vary based on site conditions and vehicle operation.

A/N	Wheel 1	Wheel 2	Axle Total	WC	km/h
Locomotive					
F	5350 kg	5850 kg	11200 kg	0	4.7
F	5350 kg	5850 kg	11200 kg	0	4.5
F	5350 kg	5850 kg	11200 kg	0	4.3
F	5350 kg	5850 kg	11200 kg	0	4.3
F	5350 kg	5850 kg	11200 kg	0	4.2
F	5350 kg	5850 kg	11200 kg	0	4.2
Wagon 1					
1	5350 kg	5850 kg	11200 kg	0	4.4
2	5350 kg	5850 kg	11200 kg	0	4.3
3	5350 kg	5850 kg	11200 kg	0	4.2
4	5350 kg	5850 kg	11200 kg	0	4.3
			44800 kg		
			Total wagon weight		
			44800 kg		

Sample of Printout
from built in printer



Customised PC software (optional) displays and
records all the weight data



MTW secure storage
& transport box



MTW-MS (Multiple Systems)



MTW Kit



MTW-MS (Multiple Systems)

CONSISTS OF (single base unit)

- 2 x loadcells
- 2 x scale main bodies
- 1 x set of shoes (to suit nominated rail type)
- 1 x set of spacer poles
- 1 x height measuring gauge
- 1 x weight indicator & printer housed in carrycase
- 1 x set of height packers
- 1 x battery charger
- 1 x spanner
- 1 x cable set
- 1 x operation manual