

INFINITY

High or Low Speed Train Weighing System

The Future of Train Weighing Systems



INFINITY LS - Low Speed weighing up to 15km/h:

The Weigh In Motion INFINITY – LS weighbridge system is the ideal low speed (up to 15km/h) solution for mine loadouts, industrial plants, cement plant, power stations, steel mills etc. It consists of 2 electronic weigh sleepers & 4 dummy sleepers braced together forming one solid structure, including accessories, control cabinet and a PC with train weighing software.

The Infinity – LS train weighing system is installed one wagon length or more out from the loadout and provides the operator axle, bogie and wagon weight data in real time. This unique train weighing system enables the loading operator to regulate the filling so that the wagons are not overloaded. Weight data storage, printout & other features are available and train weighing results can be accessed from any location via the internet.

Installation of the Infinity - LS train weighing system takes approximately 1 ~ 2 days. Concrete foundation or civil works are not always required, however this is greatly dependent upon site conditions, although some form of ballast stabilisation is highly recommended to eliminate impact effects at the weighing transition points to ensure weighing accuracy and scale reliability.

INFINITY HS - High Speed weighing up to 80km/h:

The High-Speed Weigh In Motion Infinity - HS is capable of train weighing up to 80km/h, dependent on track/site conditions & test train/rolling stock. The rail weighing system consists of 6 electronic weigh sleepers & 12 dummy sleepers braced together forming one solid structure, including accessories, control cabinet and a PC with train weighing software. Train weighing results can be accessed from any location via the internet.

Installation of the Infinity - HS train weighing system takes approximately 2 ~ 3 days. Concrete foundation or civil works are not always required (see above INFINITY LS).

BENEFITS:

- **Actual reliable load cell based system**
- **No rail cutting, welding or grinding required**
- **Minimal installation / repair track down time**
- **Approx. 30 minutes to change parts (if required)**
- **Temperature compensated**

LS =
LOW SPEED

0.1 TO 15KM/H
(0.06 TO 9MPH)

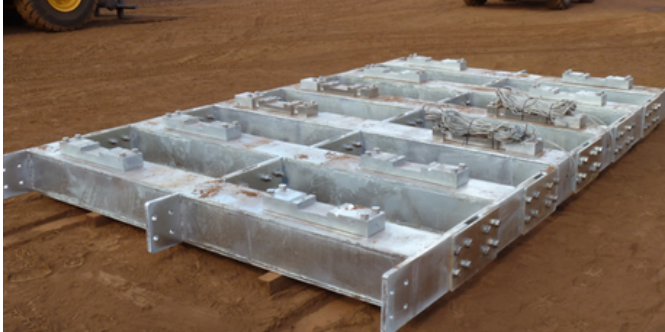
HS =
HIGH SPEED

0.1 TO 80KM/H
(0.06 TO 50MPH)

Technical Data

| | |
|-----------------------|---|
| Capacity | 37.5t per Axle (can be upgraded to 50t per Axle) |
| Accuracy | ± 0.5% - 2% wagon approx. ± 0.25% - 0.5% total train approx. |
| Operating Temperature | -10°C - +80°C (in-track equipment only) |
| Transit Speed | Unlimited (approval by rail authority) |
| Voltage | 24V DC / 110V - 250V AC |
| Data Trans | TCP / IP |

Note: Images are for illustration purposes only. Speeds and accuracies may vary based on site conditions and vehicle operation.



INFINITY OVERVIEW:

- Low & High speed weighing
- Reliable loadcell based system
- Can be installed in a curved track *(up to 5km/h)
- No rail cutting, welding or grinding required
- Approx. 30 minutes to change parts
- Temperature compensated



Installation of INFINITY 'LS' weighing system in curved track