

Over 85 Years of Innovation

TRAKMATE

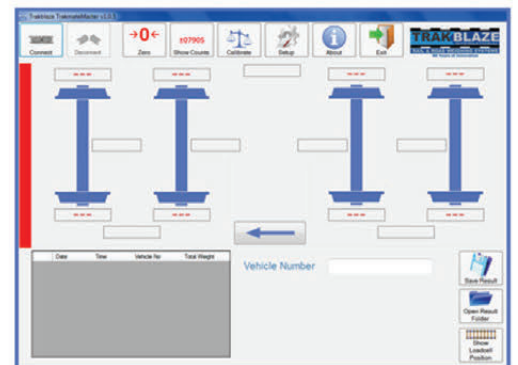
RAIL WORKSHOP WEIGHING & BALANCING SYSTEM



Trakmate is a new and unique concept design for the weighing and balancing of any type of rail vehicle. It is the real solution for weighing and balancing in all rail manufacturing, maintenance workshops or other suited applications.

Why should a rail vehicle be balanced:

1. Possibly prevent derailments
2. To improve safety
3. Prevent break lockups & wheel flat spots
4. Evenly balanced rail vehicles provide smoother mobility in turn providing better fuel economy
5. Prevent rail vehicles & rail track infrastructure damage



Touchscreen PC controller



Trakmate 2 loadcells under rails



Trakmate test press is used for on-site calibration - no test train required



Bogie balancing press fitted with Trakmate loadcells

BENEFITS:

- *Simple to install*
- *Suits all rail types*
- *Heavy duty - with overload protection*
- *Any wheel weight combination via the touch screen PC*
- *Temperature compensated*
- *Cost effective*



MINING, RAIL & ROAD WEIGHING SYSTEMS
85 Years of Innovation

Call or Email today to find out more.

Trakblaze Pty Ltd
5 Mareno Road, Tullamarine 3043 Victoria Australia
Tel: +61 3 9318 9277 Fax: +61 3 9318 9533
Email: info@trakblaze.com Web: www.trakblaze.com